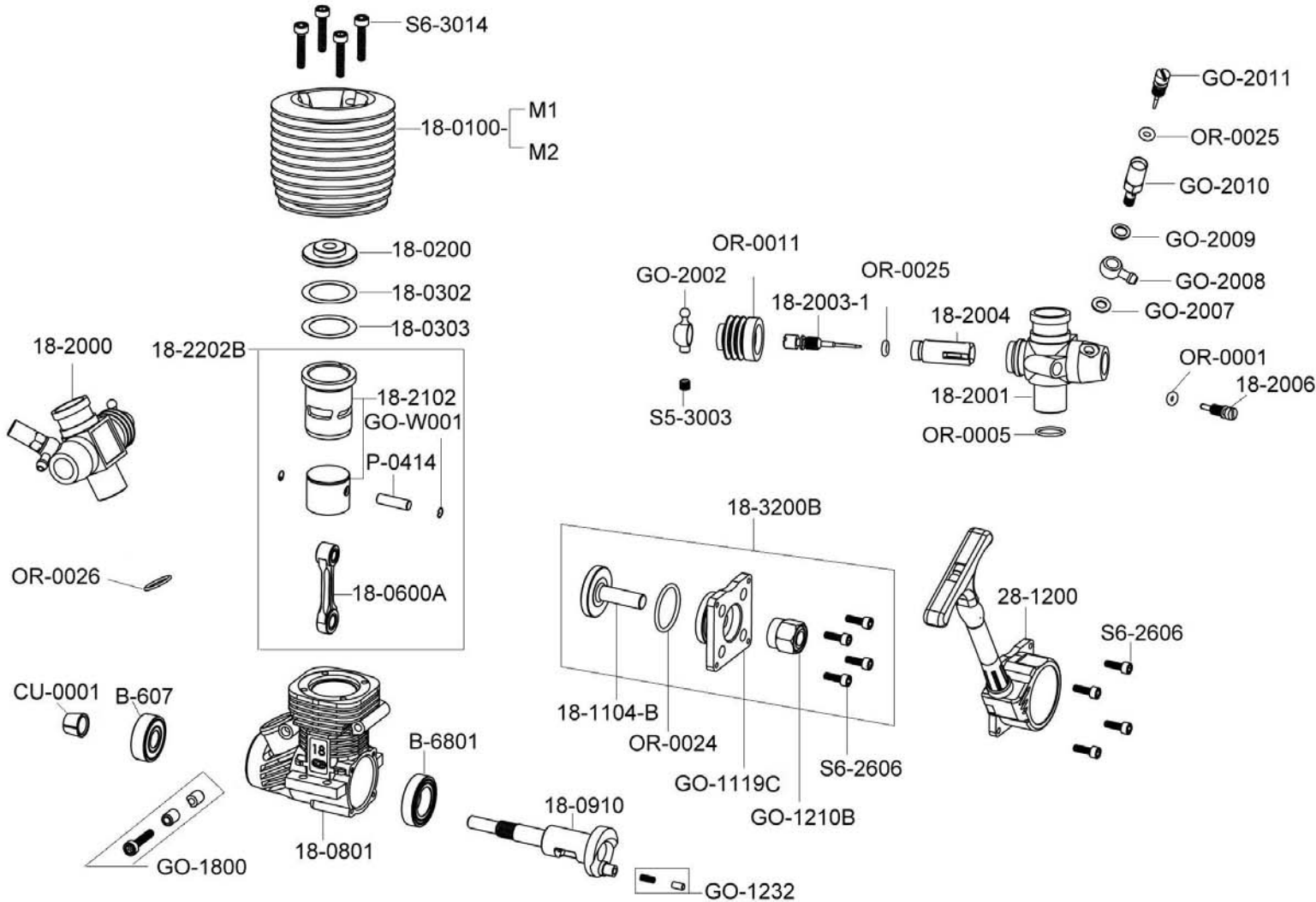




GO ENGINE CO.,LTD.

18S EXPLODED VIEW & PARTS LIST



ITEM NO	DESCRIPTION
18-0100-M1	Cylinder Head Blue
18-0100-M2	Cylinder Head Black
18-0200	18 Burn Room
18-0302	Burn Room Washer (0.2mm)
18-0303	Burn Room Washer (0.3mm)
18-0600A	Connecting Rod For 15.18.20
18-0801	18 Crankcase Main Body
18-0910	Crankshaft 12mm (SG)
18-1104-B	T Axle
18-2000	Carburetor Complete Set (Slide)
18-2001	Carburetor Main Body (Slide)
18-2003-1	Throttle Needle (Slide)
18-2004	Throttle (Slide)
18-2006	Throttle Stop Adjustment Screw
18-2102	18 Cylinder Sleeve Piston 3P
18-2202B	18 Cylinder Complete Set 3P
18-3200B	"T" Start Axle Set 15.18.20
28-1200	Pull Start Complete Set
GO-1119C	"T" Axle Connective Set
GO-1210B	One Way Shaft
GO-1232	Crankshaft Spring Gudgeon Pin Set
GO-1800	Carburetor Setting Pin
GO-2002	Throttle Screw Cap
GO-2007	Fuel Supply Washer 7.5x4
GO-2008	Fuel Supply Nipple
GO-2009	Fuel Supply Washer Aluminum 7.5x5
GO-2010	Main Needle Seat
GO-2011	Main Needle
GO-W001	"G" Pin Snap Ring 2pcs/set
OR-0001	"O" Ring 2x1.8
OR-0005	"O" Ring 10x1
OR-0011	Throttle Boot For 15.18
OR-0024	"O" Ring 17x1.5
OR-0025	"O" Ring 2.9x1.78
OR-0026	"O" Ring 12x1.5
CU-0001	Brass Cone
S5-3003	Screw M3x3
S6-2606	Screw M2.6x6 4pcs
S6-3014	Screw M3x14 4pcs
B-6801	Rear Bearing 12mmx21
B-607	Front Bearing 7mm
P-0414	Piston Gudgeon Pin 4x14